

eThermostat



Electronic Thermostat with Energy Management Mode

eThermostat is an efficient small size electronic thermostat designed for OEM installation. It has been designed for all kind of coolers and freezers.

Its advanced design and control features are managed by the advanced microcontroller technology and patented Algorithm.

Features

- 1 Temperature Sensor Input
- 1 Configurable Input (Analog/Digital)
- Voltage and Frequency Supervisor
- Defrost Functions
- Energy saving functions
- Remote status LED
- Installation area monitoring for thermal event prevention
- Adjustable differential for improved control
- Smart configurable start-up delay to protect from unstable supply
- Galvanic Isolated– Reinforced insulation
- Expandable

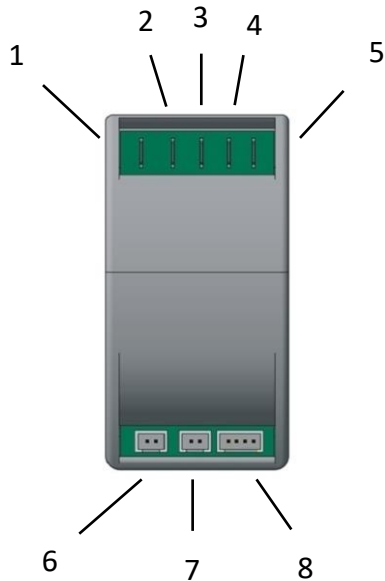
Technical Data

eThermostat Specifications		
Operating conditions	Nominal Voltage	230 VAC
	Operation Voltage Bandwidth	160 - 250 VAC
	Ambient Temperature	Tmin -40°C Tmax+50°C
	Humidity	0 - 85 %RH
	Compressor Output Current Capacity	10(6)A
	Fan Motor Output Current Capacity	3(3)A 250VAC 3(3)A 30VDC
Thermal protection	- Temperature limits +85 °C - Temperature differential 15°C / 16 min	
Plastic Housing	UL94 V-0 Flame Retardant	
Relay Lifetime	Compressor Relay lifetime cycles > 100.000	
	Fan Relay lifetime cycles > 50.000	
Pollution Degree	III (3)	
PTI	250	
Insulation (between Main Power and Accessible Parts)	Reinforced	
Power Connections	6.3mm x 0.8mm flat, terminal	
Total weight (g)	0.155 kg	
Accuracy	NTC Sensor	± 0.5 °C (Operating Temp. Range: -28°C to +50°C)
	eThermostat	± 0.2°C

Options / Accessories

Sensor	Cabinet temperature sensor 1.5m NTC-10K			
Input 2	Door Switch	Rocker Switch	Trimmer	Light Sensor
Input 3	Programmer	LED Indicators	Wireless adaptor	

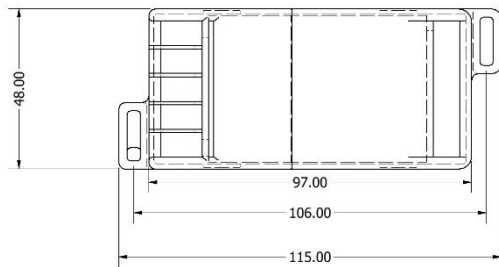
Connection Layout



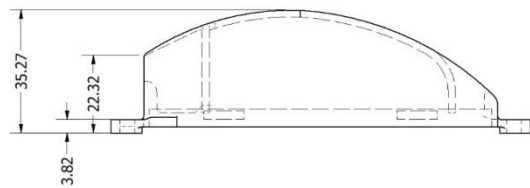
1. Compressor Output
2. Line In
3. Neutral
4. Fan input
5. Fan output
6. Cabinet Temperature Sensor
7. Port B (Rocker Switch/Door Sensor/Trimmer)
8. Port C (External LED/Wireless adaptor/Programming port)

Dimensions drawings

Top View



Side View



All Dimensions are given in mm

Approvals		
CB - Test Certificate	IEC 60730-1 : 2013 + A1 IEC 60730 - 2 - 9 : 2015 + A1 : 2018	The controls pass the GW750 test according IEC 60335-1:2010 clause 30.2.3.2.
CE 0413 - Declaration of Conformity - Verification of Conformity	EN 60730 - 1 : 2016 EN IEC 60730 - 2 - 9 : 2019	Relays separately tested as sealed device according to IEC / EN 60079-15:2010 clause 22.5.
RoHS III (EU Directive 2015/863)		